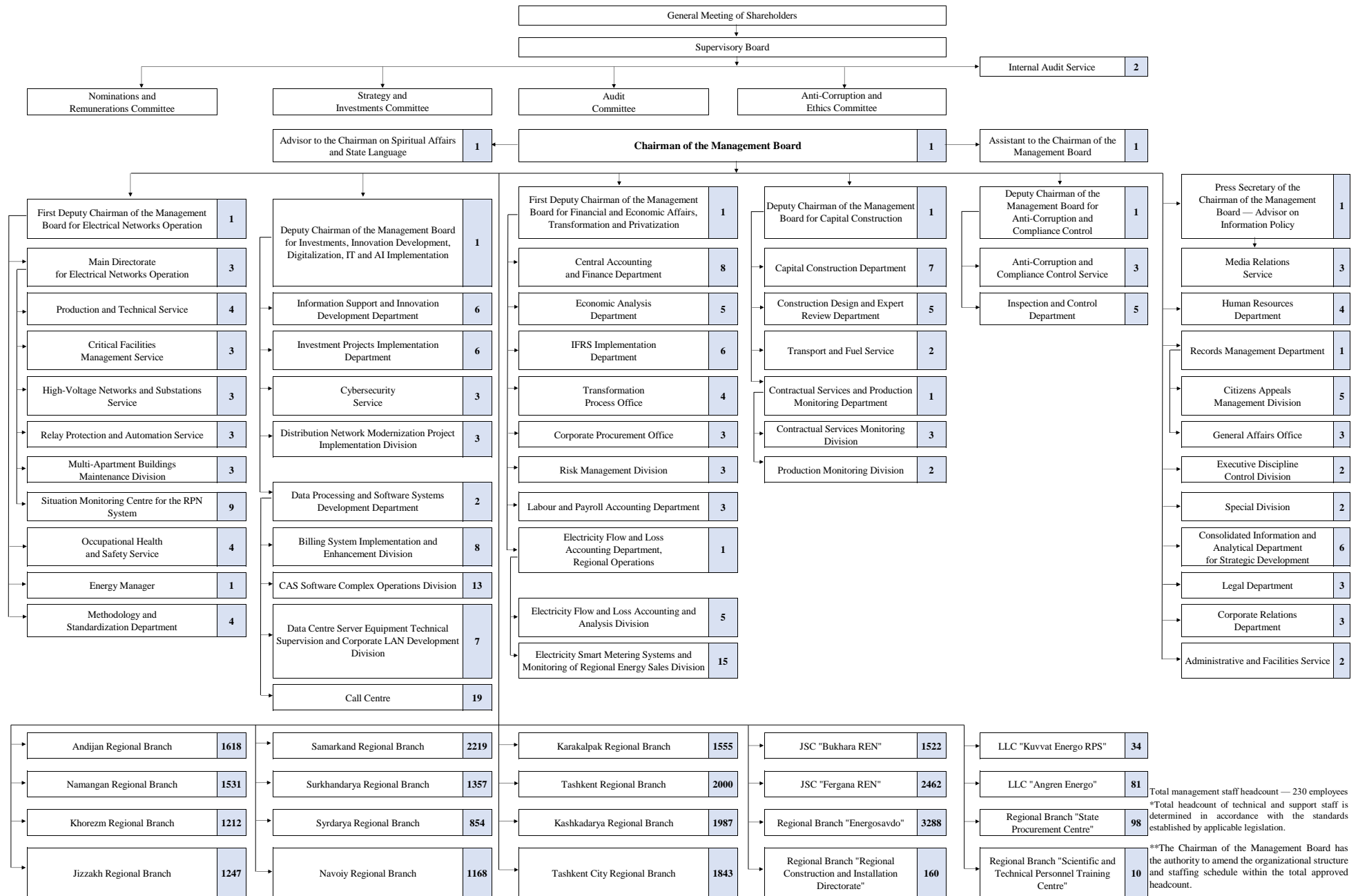


ORGANIZATIONAL STRUCTURE OF JSC "Regional Electrical Power Networks"



Total management staff headcount — 230 employees
*Total headcount of technical and support staff is determined in accordance with the standards established by applicable legislation.
**The Chairman of the Management Board has the authority to amend the organizational structure and staffing schedule within the total approved headcount.